



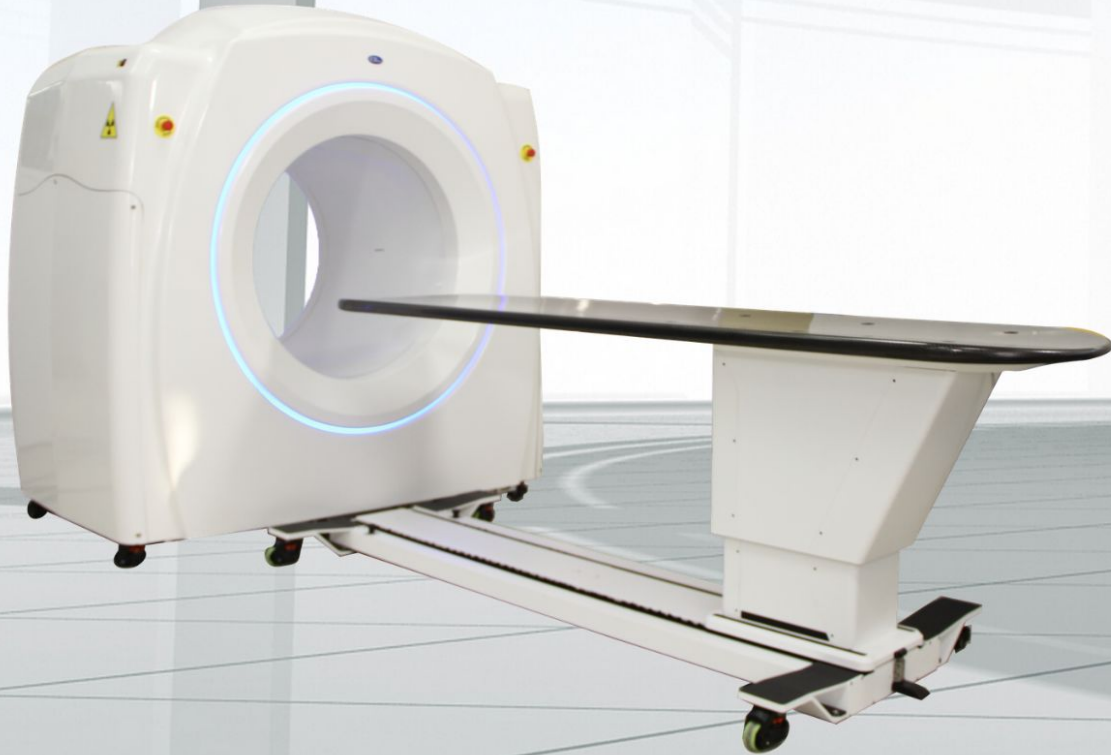
| Image Capture Review

CLARIS XT

The New Standard of Care
in Medical Imaging

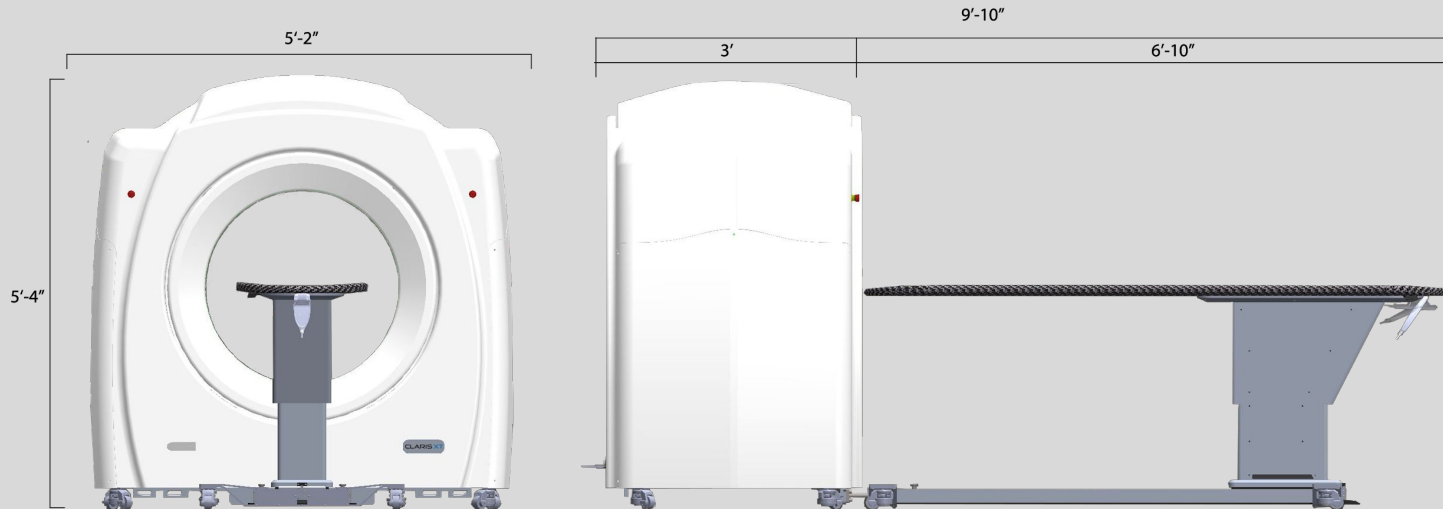
R & R Service & Sales
"Your Cruise Ship X-ray Equipment Specialists"
2431 Oak Beach Blvd
Sebring, FL 33875
954-214-2685

CLARIS XT



PRODUCT SPECIFICATIONS

Total Weight	800 lbs (with patient bed)	
Dimensions	Width	62"
	Depth (Max)	117" (with patient bed)
	Height	63"
	Bore	28" or 31"



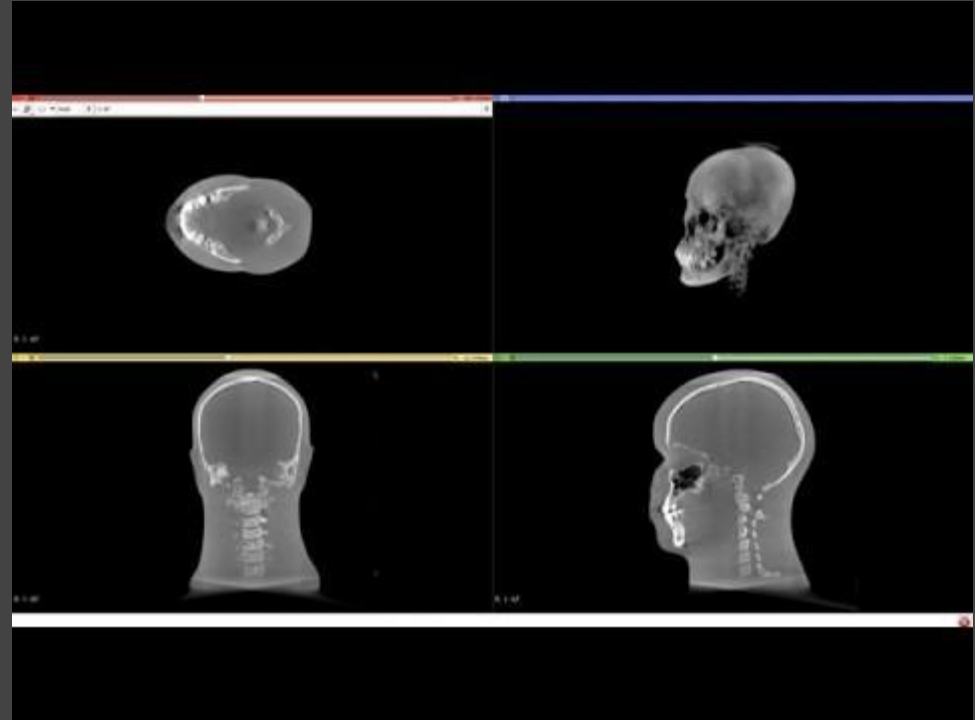
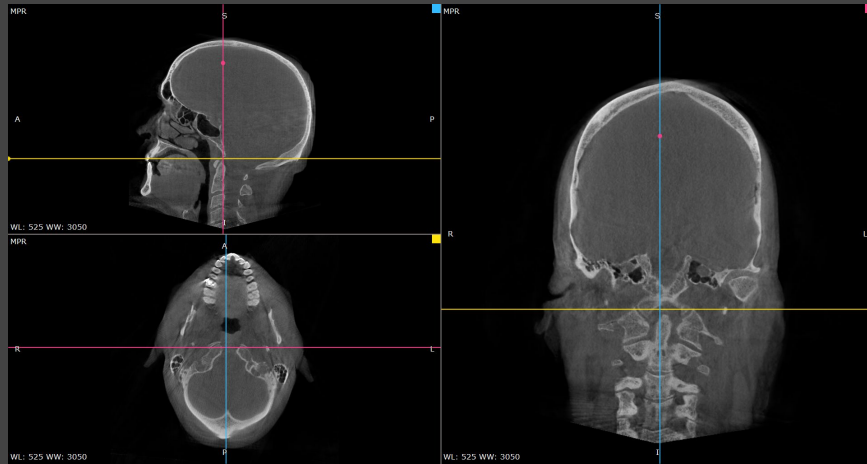
PRODUCT SPECIFICATIONS



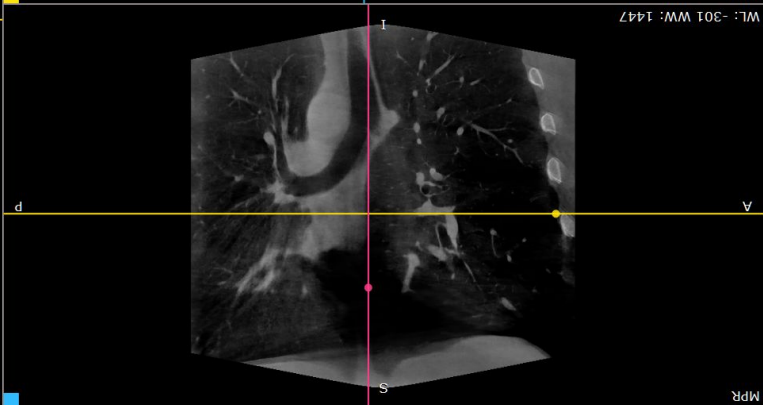
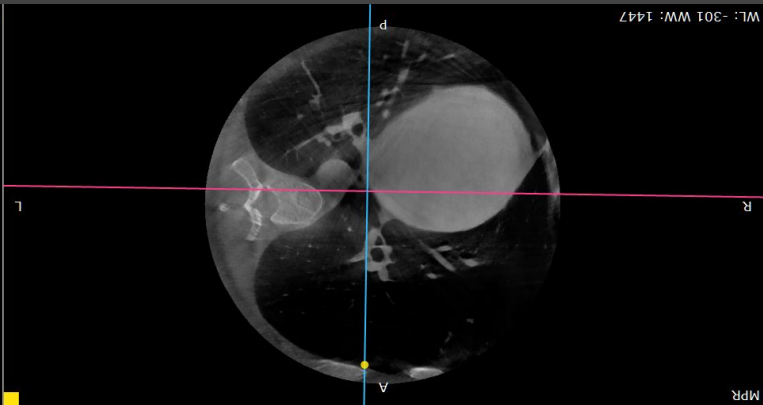
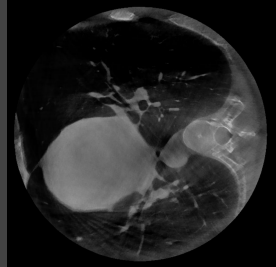
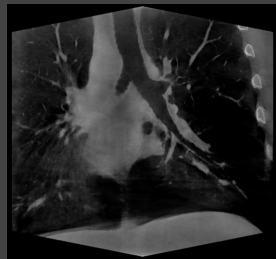
Scan Time Tomosynthesis	22 sec / 45 sec 180 images / 360 images	
Image Detector	17 x 17" amorphous SiTFT w/ CSL TL 140 μ m pixel pitch	
Possible Image Resolutions	3072 x 3072 1536 x 1536	X-ray 140 μ m
Grey Scale	16 bit (65,536 gray levels)	
Voxel Size	\geq 85 μ m	
Patient Position	Supine	

Reconstruction	< 15-45 sec	
Software	XC 2.0 acquisition workstation with export capabilities to PACS and multiple viewing softwares. DICOM compatible.	
Power Required	115 or 230 V single phase power Input Voltage: 6 kVA No special hookup required	
Acquisition Technique	Single X-Ray images multiple exposures. Sparse sample methods used to reduce patient dose.	
X-Ray Source	High frequency, constant potential (DC), rotating anode Tube Power: 5 kW (e.g. 120 kV, 50 mA) Max. Tube Voltage: 120 kV Max. Tube Current: 100 mA Focal Spot Size: 300 μ m / 600 μ m Max. Exposure Time 100 ms	

Case Study Images



Human Chest



Standard Package

- Gantry and Table
- Acquisition Station
- Dual Monitor
- Lightweight Viewer

Annual Service Fee

- 10% / year (Parts and on-site service)

Additional Options

- AI Engine (FDA Approved): \$25,000
- PACS Storage (4TB, Raid 10): \$4,900

CLARIS XT

Purchasing Kit



With a 5-year support contract

Competitors

CLARIS XT

Weight	> 2000 lbs	800 lbs
Width	> 80"	62"
Height	> 90"	63"
Depth	~ 80"	117"
Power Required	3 phase, special connection	120V / 240V, plug in
Resolution	300 micron	140 micron, 3.5 lp/mm
Study Time	~ 3 minutes	Minimum 22 sec. acquisition time 15 sec. reconstruction time
Final Cost	> \$300,000	\$160,000
Average Annual Maintenance Contract	\$32,400	\$16,000

FINANCIAL ANALYSIS

- CT service per patient: \$654
- Remote CT Reading Fee: \$75 / study
- Revenue per patient: $\$654 - \$75 = \$579$
- Claris monthly payment with 5-year lease: \$3,733

→ Net monthly revenue for one patient per day:

$$(\$579 \times 21 \text{ days}) - \$3,733 = \$8,426/\text{month}$$

CT Scan Reimbursement Schedule



Body Section	Medicare	Medicaid
• Head & Brain (w/o contrast)	\$130.01	\$69.43
• Head Combination	\$288.26	\$153.93
• Orbit / Sella / Post Fossa / Ear (w/o contrast)	\$130.01	\$69.43
• Skull (contrast)	\$255.98	\$136.69
• Maxillofacial Area (w/o contrast)	\$130.01	\$69.43
• Face & Jaw (contrast)	\$255.98	\$139.69
• Soft Tissue Neck (w/o contrast)	\$130.01	\$69.43
• Neck tissue (contrast)	\$255.98	\$136.69

Source:
<https://www.sparrow.org/upload/docs/MySparrow/Radiology%20Pricing.pdf>



CLARIS XT EVOLUTION

- First version in 2012
 - FDA 510K allowance for Orthopedic work (bone, head, neck, spine & extremities)
- Claris in 2020
 - Large bore (28" or 31")
 - Much larger reconstruction volume
 - Much faster acquisition and reconstruction time
 - Capable of standard X-ray and CT studies → Claris is "X-ray room replacement" device
- Work in progress:
 - Stitching to get a full-spine imaging solution
 - Enhancing Soft Tissue details for early Stroke Detection using Dual Energy solution
 - AI integration for artifact and noise reduction → minimize the dose
 - FDA approval for Fluoroscopic imaging

FUTURE DEVELOPMENTS

- ARTIFICIAL INTELLIGENCE

- AI technology will create ongoing enhancements that can be added to the Claris XT.
- These opportunities will expand Claris XT's capabilities.

- TRADE-IN, TRADE-UP

- In 5 years time, the Claris XT will be eligible for a trade in program that will provide you upgraded technology at a fraction of standard pricing.

THANK YOU !

